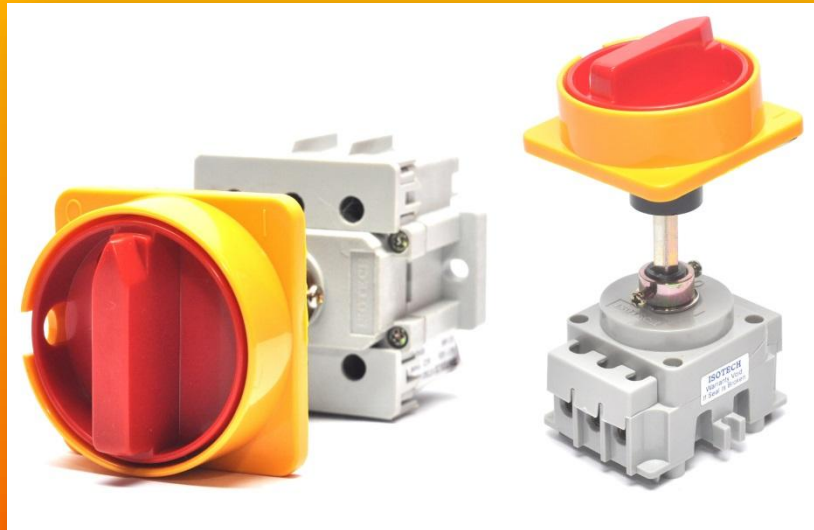




# ISOTECH

Your Engineering Partner

Version 1.16



## KT 96 Series Electrical Isolator

---

### *IP65 Isolator*

ISOTECH KT 96 Series is well known to its flexibility where it can be install in any type of enclosures that customer may require. The installation is simple and maintenance free. To meet the often tough conditions, the KT 96 Series is made of strong and high quality materials.

# KT 96 ISOLATORS

**ISOTECH KT 96 Series** is designed to be mounted inside control panel or power distribution panel to isolate it from the main circuit. They are manually operated switches, padlockable in the OFF position, with reliable position indication, and designed to prevent accidental starting of electrical motor e.g. during maintenance or repair situations.



## KT 96 Series Features

- Design according to IEC60947-3
- Captive Combination Head Screws for your choice of Screwdriver
- Large 16-95mm<sup>2</sup> Cable Conductor Terminals
- Steel plated terminals screws will never break
- Large padlocking capacity – suit industry up to 12mm padlock
- **With** interlocking system
- Premium moulding materials with chemically resistance
- Made in Malaysia

Rated Voltage Ue	Rated Current Ie	2 Pole Part No.	3 Pole Part No.	Max. Cable
500V	16A	KT216-96	KT316-96	16mm <sup>2</sup>
500V	25A	KT225-96	KT325-96	16mm <sup>2</sup>
660V	40A	KT240-96	KT340-96	16mm <sup>2</sup>
660V	63A	KT263-96	KT363-96	35mm <sup>2</sup>
660V	75A	N/A	KT375-96	35mm <sup>2</sup>
660V	100A	N/A	KT3100-96	35mm <sup>2</sup>
660V	100A	N/A	KT3100B-96	95mm <sup>2</sup>
660V	125A	N/A	KT3125-96	95mm <sup>2</sup>
660V	160A	N/A	KT3160-96	95mm <sup>2</sup>
660V	200A	N/A	KT3200-96	95mm <sup>2</sup>